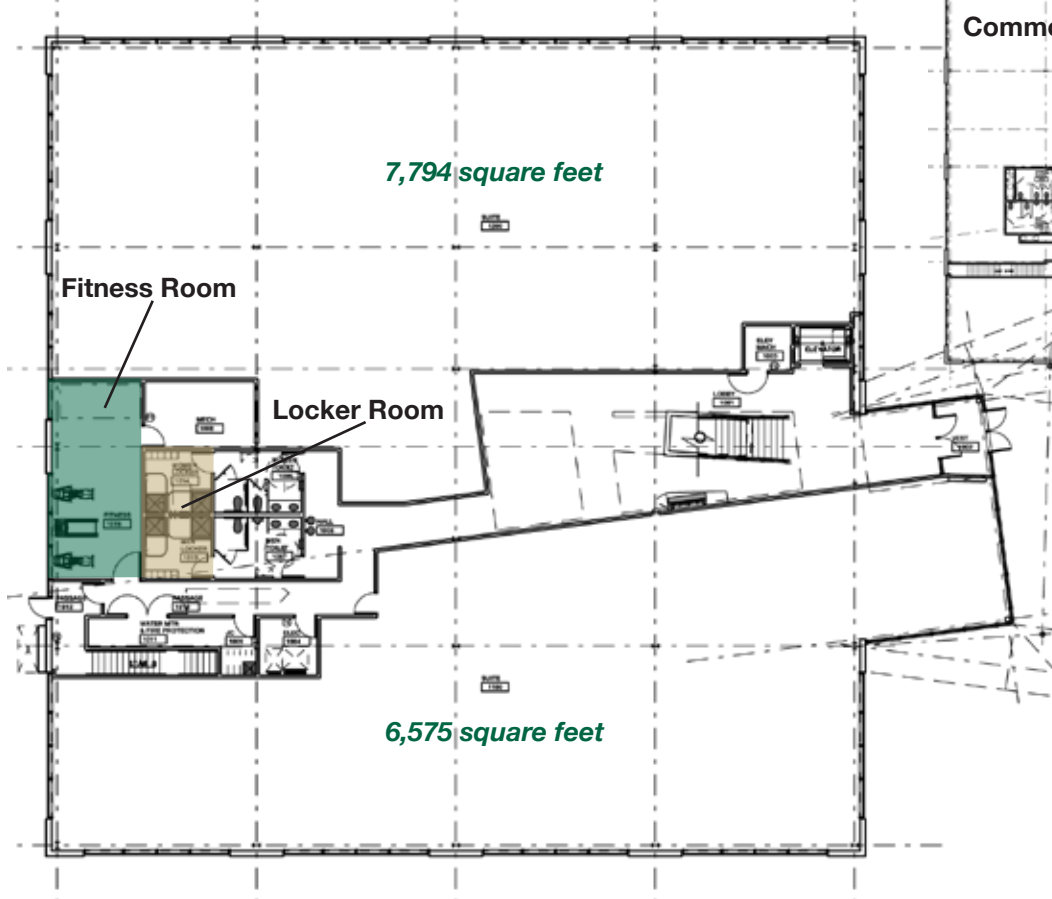


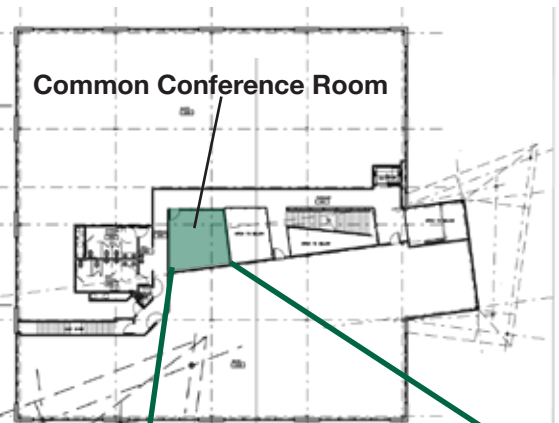
# Medical Office Space Available

 **MetroHealth** *Village*  
Wyoming, MI

First Floor Plan



Second Floor Plan



## Property Highlights

- Located on Gezon Parkway by Byron Center Ave
- Shared tenant fitness center
- Home to Michigan Obstetrics & Gynecology, P.C.
- Common conference room
- Directly accessible main floor space
- LEED certified building for utility cost savings
- Lease Space Available: Up to 14,300 SF

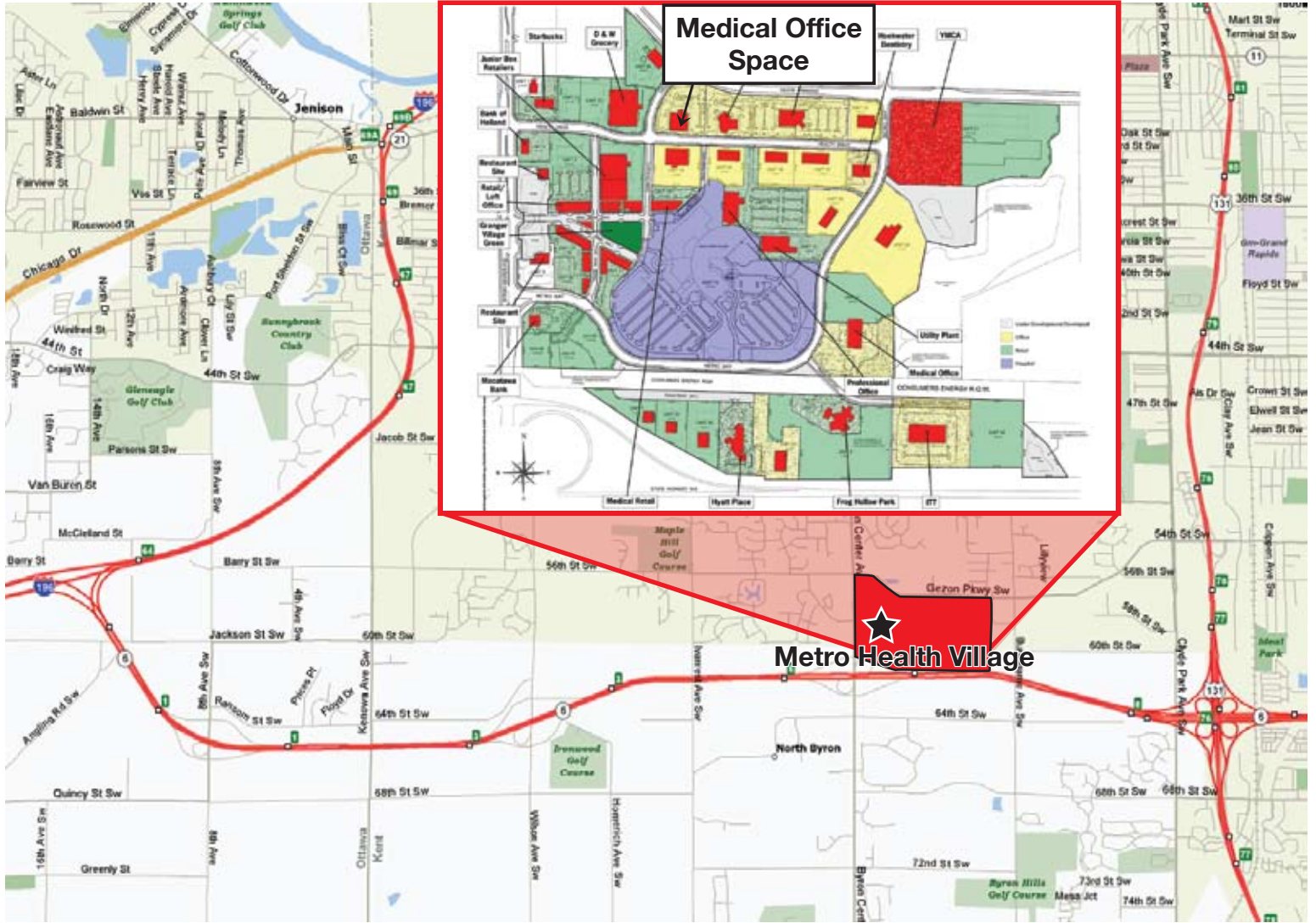


**Jason Granger**  
D 616.242.6646 • C 616.299.3092  
jgranger@thegrangergroup.com

2221 Health Dr SW Ste 2200  
Wyoming, MI 49519  
616.248.3566  
www.thegrangergroup.com

# MetroHealth Village Byron Center Dr & Gezon Pkwy

Wyoming, MI



## Demographics

Radius	3 mile	5 mile	10 mile
Population	44,105	139,596	437,919
Income	\$51,052	\$46,571	\$45,422
Households	12,537	39,540	120,546

Demographic Source: 2009 est. governmental census data