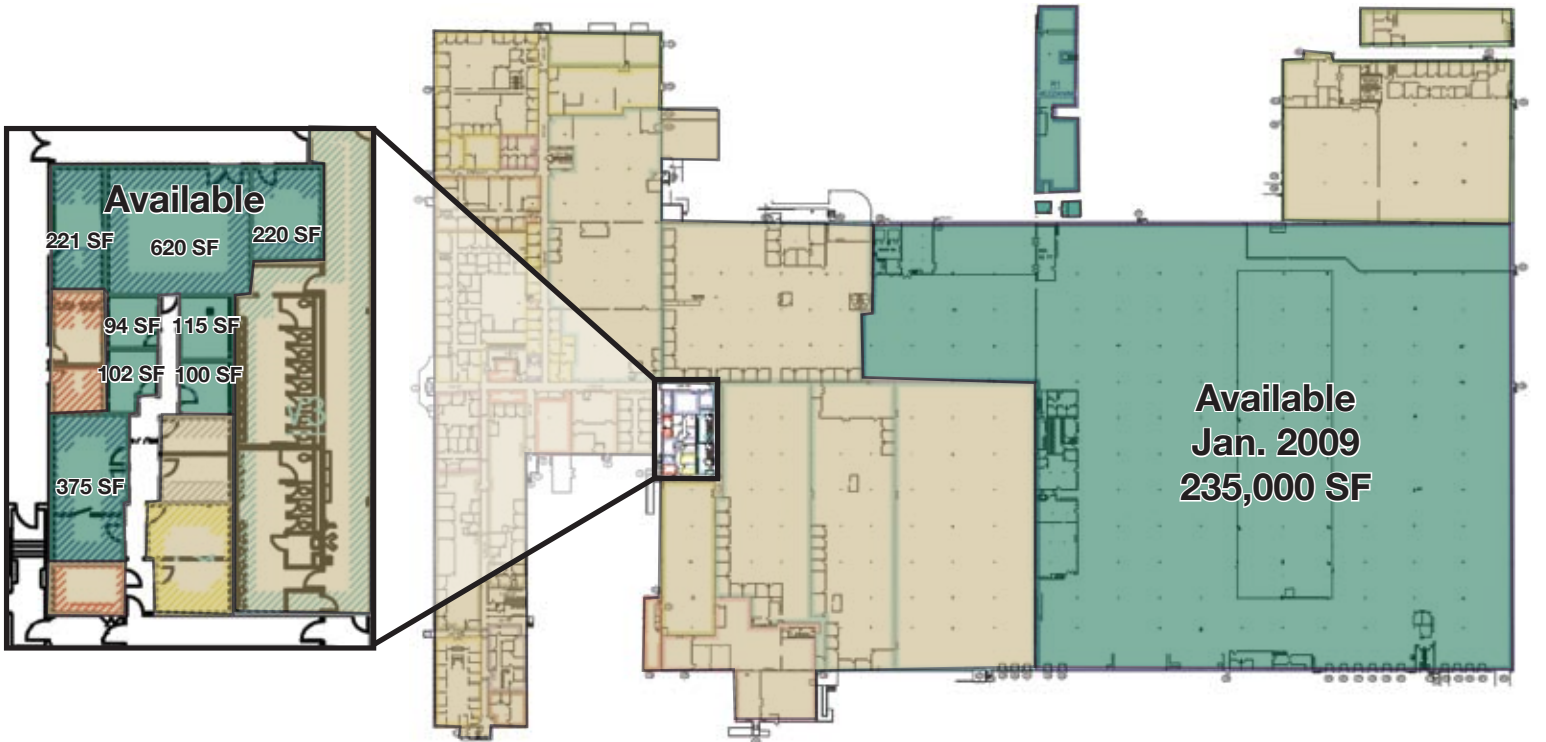


Office Space Available

211 Hilltop Road
St. Joseph, MI



Development Highlights

- 500,720 SF office and warehouse complex
- Whirlpool/Maytag offices
- Overlooking Lake Michigan
- Convenient to I-196

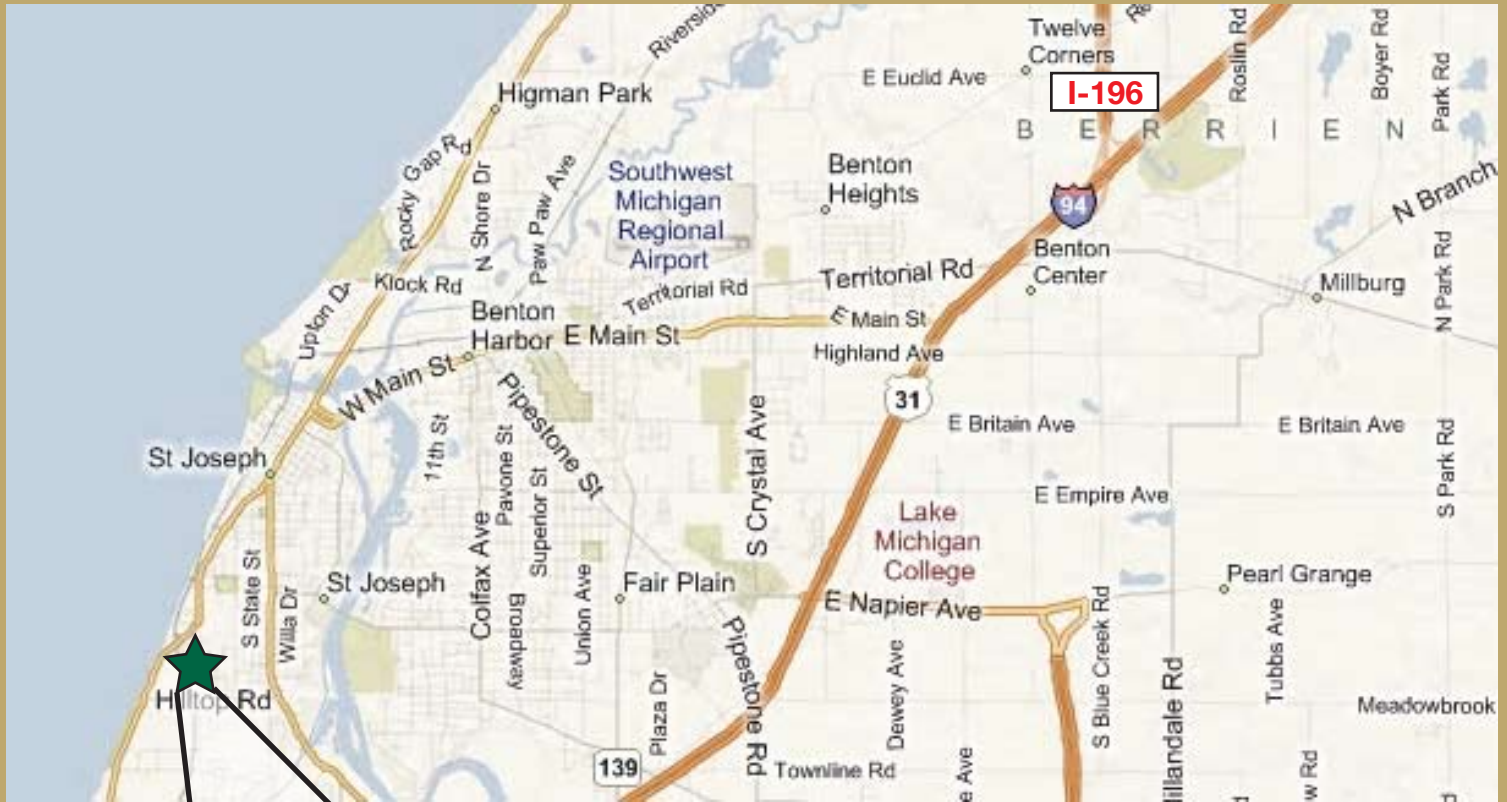


Sarah Tyler
D 616.242.6566 • C 616.560.7670
styler@thegrangergroup.com

2221 Health Dr SW Ste 2200
Wyoming, MI 49519
616.248.3566
www.thegrangergroup.com

Office Space Available

211 Hilltop Road
St. Joseph, MI



Demographics

Radius	3 mile	5 mile	10 mile
Population	28,812	57,077	75,505
Income	\$45,667	\$40,933	\$41,173
Households	8,995	16,938	22,128

Demographic Source: 2009 est. governmental census data