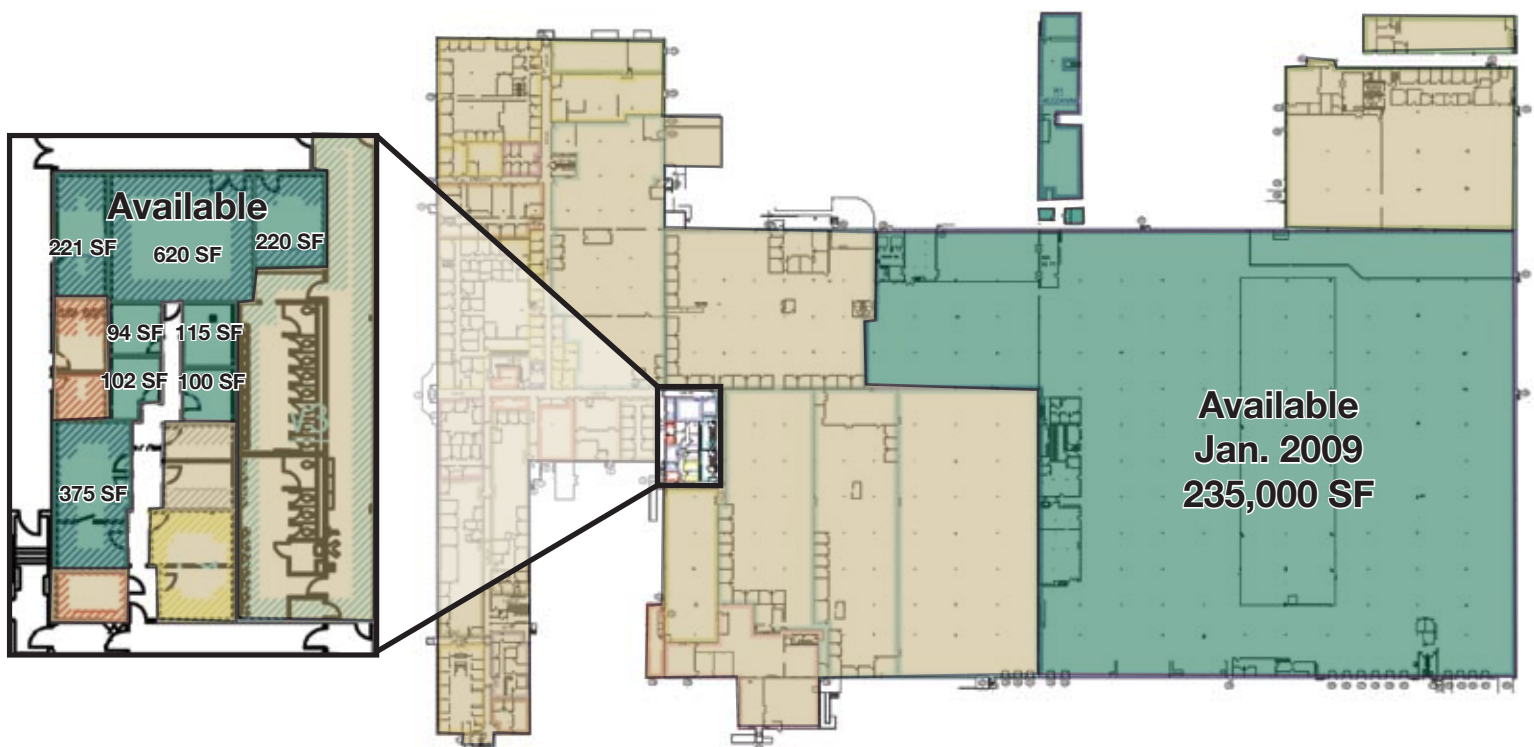


Manufacturing Space Available

211 Hilltop Road
St. Joseph, MI



Development Highlights

- 500,720 SF office and warehouse complex
- Whirlpool/Maytag offices
- Overlooking Lake Michigan
- Convenient to I-196

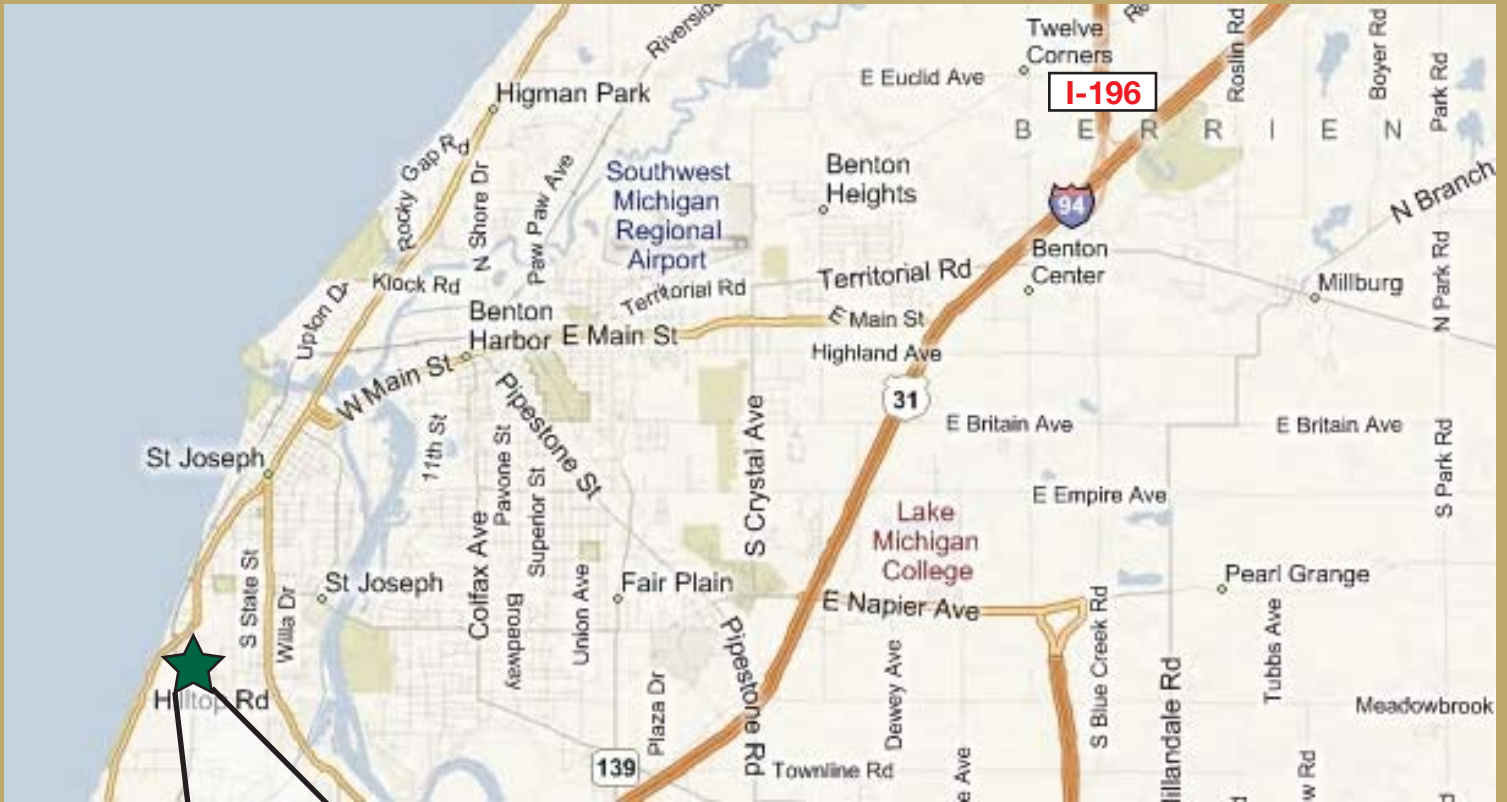


Sarah Tyler
D 616.242.6566 • C 616.560.7670
styler@thegrangergroup.com

2221 Health Dr SW Ste 2200
Wyoming, MI 49519
616.248.3566
www.thegrangergroup.com

Manufacturing Space Available

211 Hilltop Road St. Joseph, MI



Demographics

| Radius | 3 mile | 5 mile | 10 mile |
|------------|----------|----------|----------|
| Population | 28,812 | 57,077 | 75,505 |
| Income | \$45,667 | \$40,933 | \$41,173 |
| Households | 8,995 | 16,938 | 22,128 |

Demographic Source: 2009 est. governmental census data